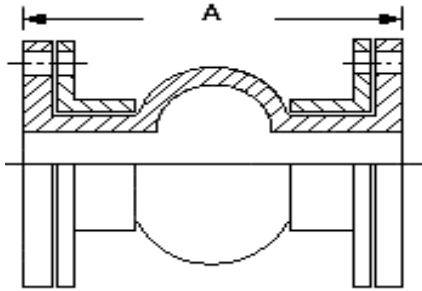


MDC MODEL 301 WIDE ARCH RUBBER EXPANSION JOINTS



MATERIALS OF CONSTRUCTION	
BODY / FLANGE	Chlorobutyl (Butyl)
REINFORCEMENT	Nylon Tire Cord
BACKUP "L" RINGS	Cast Ductile Iron (150# drilled), Galv.

NOTES:

- * Vacuum Range : 26"Hg.
- * Warning: Do not extend rubber expansion joints when installed in vacuum (suction) applications.
- * Control Units must be used in systems where proper guiding and anchoring might not be possible or verifiable.
- * Maximum operating temperature: 250 F (where pressure is less than 15 psig, temperature can be increased).

QTY	MDC P/N	SIZE IN/MM	FACE TO FACE "A" (IN.)	AXIAL COMP (IN.)	AXIAL EXT (IN.)	LATERAL +/- (IN.)	ANGULAR +/- DEG	MAX. PRESS. (PSIG.)	WEIGHT (LBS.)
	1.00"-301	1"	6"	5/8"	1/4"	1/4"	25	150	4
	1.50"-301	1-1/2"	6"	5/8"	1/4"	1/4"	25	150	5
	2.00"-301	2"	6"	1-3/4"	3/4"	3/4"	35	150	8
	2.50"-301	2-1/2"	6"	1-3/4"	3/4"	3/4"	30	150	9
	3.00"-301	3"	6"	1-3/4"	3/4"	3/4"	30	150	10
	4.00"-301	4"	6"	1-3/4"	3/4"	3/4"	25	150	14
	5.00"-301	5"	6"	1-3/4"	3/4"	3/4"	25	150	17
	6.00"-301	6"	6"	1-3/4"	3/4"	1"	20	150	19
	8.00"-301	8"	6"	1-3/4"	3/4"	1"	20	150	25
	10.00"-301	10"	8"	1-3/4"	3/4"	1"	15	150	34
	12.00"-301	12"	8"	1-3/4"	3/4"	1"	15	150	52
	14.00"-301	14"	8"	2"	7/8"	1-1/8"	12	130	60
	16.00"-301	16"	8"	2"	7/8"	1-1/8"	12	110	69
	18.00"-301	18"	8"	2"	7/8"	1-1/8"	9	110	78
	20.00"-301	20"	8"	2"	7/8"	1-1/8"	9	110	93
	24.00"-301	24"	10"	2-1/4"	1"	1-1/8"	9	100	113
	30.00"-301	30"	10"	2-1/4"	1"	1-1/8"	6	100	141
	36.00"-301	36"	10"	2-1/4"	1"	1-1/8"	5	90	204

FEATURES:

- * Double-width arch, externally reinforced with "L" shaped flanges.
- * Twice the movement capability of standard single arch molded expansion joints.
- * Excellent for absorbing thermal expansion, and eliminating vibration & sound.
- * Not intended for torsion.
- * Provides lower spring rates.
- * Absorbs water pulsation and protects against start-up surge forces.
- * Less weight: metal flanges of molded spherical design are very heavy when compared to the 301 series. Less weight means lower freight cost and easier installation.
- * Less turbulence or material entrapment: molded integral flange of 301 series joints the body at a true 90 degree angle. Our product will install snug against the mating flange without voids.

APPLICATIONS:

- * Pressure piping systems in building equipment.
- * Pulp & Paper and general industrial plants.
- * Pump and turbine lines used for power generation plants, industrial machinery and universal pump blowers.
- * Feed water and drainage lines for waterworks.
- * Waste water plants.
- * Oil pipelines for industrial plants and shipbuilding yards.
- * Chillers and cooling towers.

ARE CONTROL UNITS REQUIRED ?	
YES	2, 3 or 4-rod Control Units may be specified depending on maximum surge or test pressure.
NO	
Contact factory for recommendations.	

CUSTOMER (COMPANY)	
CUSTOMER (INDIVIDUAL)	
CUSTOMER TEL / FAX	
PROJECT	
ENGINEERING COMPANY	
CUSTOMER REF.	
MDC REF.	
20711	
MDC DWG. NO.	
2008-01-03	
JMP	

MARK DAVID CANADA INC.
 2011 Lucien Thiemens
 Montreal, QC., H4R 1K8, Canada
 TEL.: (514) 748-8770, FAX: (514) 313-5697